

---

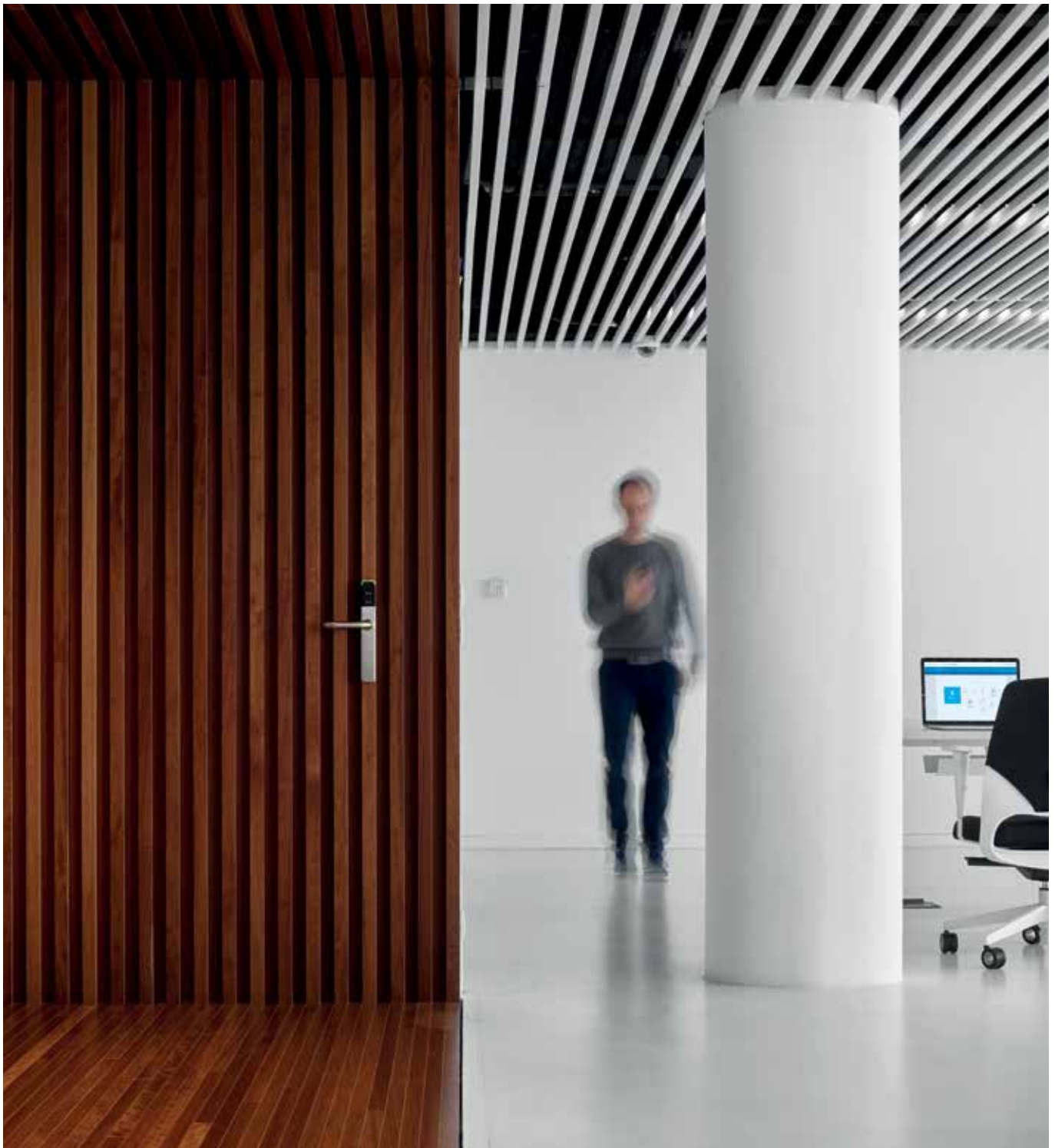
## SALTO SPACE

Smart access control technology platform designed to give users ultimate freedom of choice regarding system layout, type and number of access points as well as level of security.

**Welcome to SALTO Systems.**

[www.saltosystems.com](http://www.saltosystems.com)

**SALTO**  
inspiredaccess





## **SALTO SYSTEMS ONE JUMP AHEAD**

Since 2001, SALTO Systems has been delivering state-of-the-art wire-free and keyless electronic access control solutions. SALTO is driven by continuous improvement and is committed to developing the most technologically-advanced and flexible electronic locking solutions for any kind of door and user need. SALTO has established itself as a global market leader in electronic access control solutions.

SALTO continues to grow the value of its brand, and today, SALTO is synonymous with innovative solutions that set new standards in security, manageability, flexibility and design that bring real-world benefits.

The pioneering SALTO Virtual Network SVN data-on-card and technology platforms provide stand-alone, smart locking solutions that continue to set SALTO apart. More recently, the company's technological expertise has brought SALTO to leading positions in both cloud-based access control technology and mobile access solutions.

Having revolutionized access control in a vast number of industries and applications – from office, education, healthcare, transport and commercial buildings to business, hospitality and residential – SALTO continues to deliver industry-leading electronic locking solutions to markets across the globe.



CHAPTER 1 | p.4

## KEYLESS ACCESS

SALTO access control solutions are in use worldwide in a never-ending range of challenging and unique applications and facilities.



CHAPTER 2 | p.8

## TECHNOLOGY PLATFORM

Realising tomorrow's keyless buildings today with innovative thinking and advanced access control technology.

- SALTO Virtual Network
- SALTO BLUEnet Wireless
- SALTO Online Network
- SALTO JustIN Mobile Access



CHAPTER 3 | p.18

## ELECTRONIC LOCKING PLATFORM

The SALTO SPACE access control platform combines electronic door components, peripherals and software, providing tailor-made wire-free networked access control solutions.

- XS4 Electronic locks
- Element Design locks
- SALTO Neo Electronic cylinders
- SALTO Wall readers & Controllers
- XS4 Locker lock
- XS4 Panic bar solutions
- Mortise locks
- ProAccess SPACE

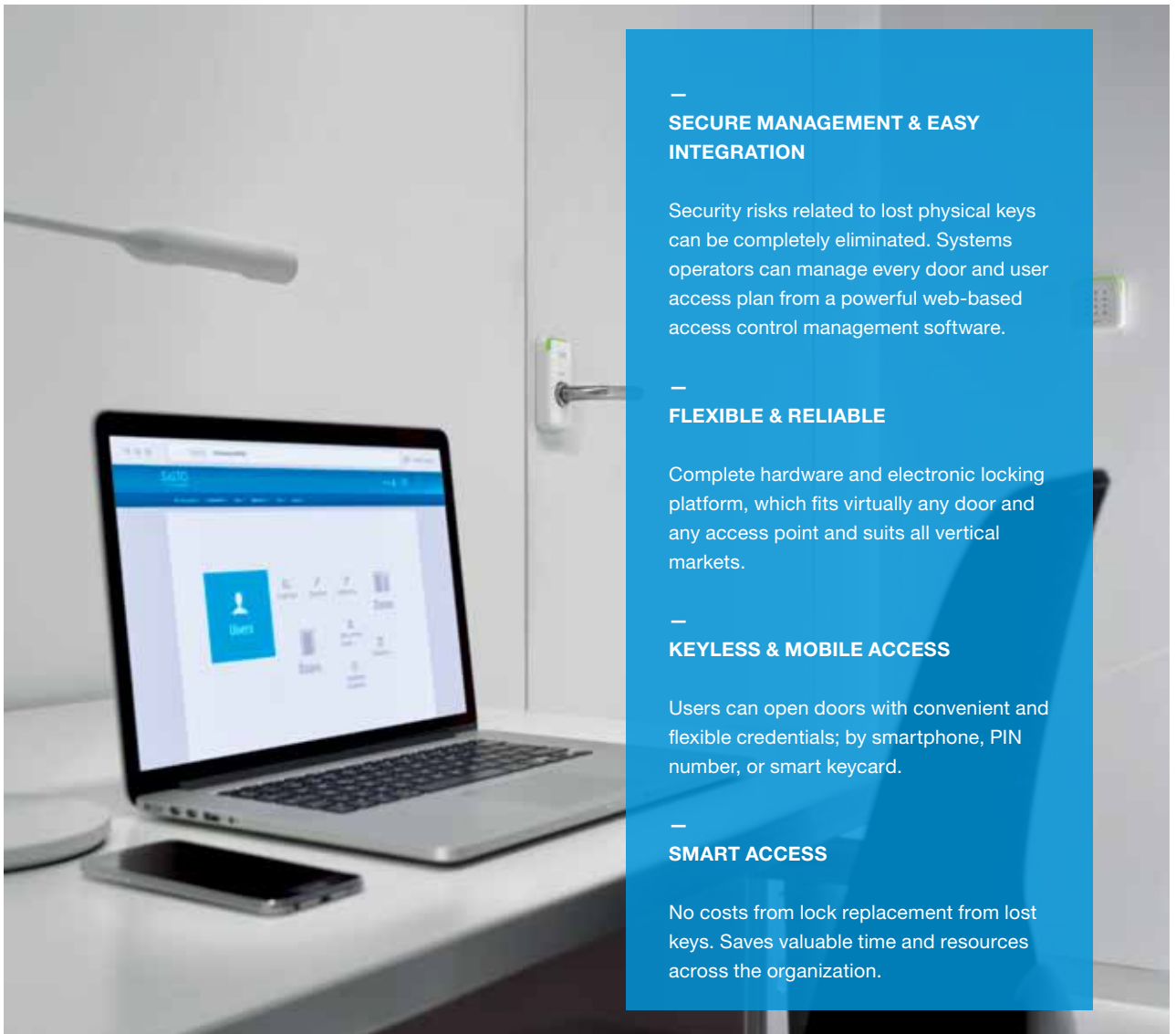
# KEYLESS ACCESS

SALTO access control solutions are in use worldwide in a never-ending range of challenging and unique applications and facilities.

Core markets include commercial and manufacturing environments, public institutions, healthcare facilities of all types, educational settings and campuses, transport installations, leisure facilities, as well as the hospitality sector. SALTO solutions cover so many projects in so many markets due to the scalability of the system - smaller projects can be implemented and then as required easily expand to larger, even transnational solutions.

## DIFFERENT BUILDING TYPES HAVE DIFFERENT SECURITY NEEDS

SALTO SPACE is a fully integrated electronic locking platform and software that bring seamless access to every door in any building in an efficient, safe and secure accessible way. It's an access control platform that brings a new level of powerful flexibility to access control so that users can order the functionalities they need most, and upgrade accordingly as the system and needs grow.



—

### SECURE MANAGEMENT & EASY INTEGRATION

Security risks related to lost physical keys can be completely eliminated. Systems operators can manage every door and user access plan from a powerful web-based access control management software.

—

### FLEXIBLE & RELIABLE

Complete hardware and electronic locking platform, which fits virtually any door and any access point and suits all vertical markets.

—

### KEYLESS & MOBILE ACCESS

Users can open doors with convenient and flexible credentials; by smartphone, PIN number, or smart keycard.

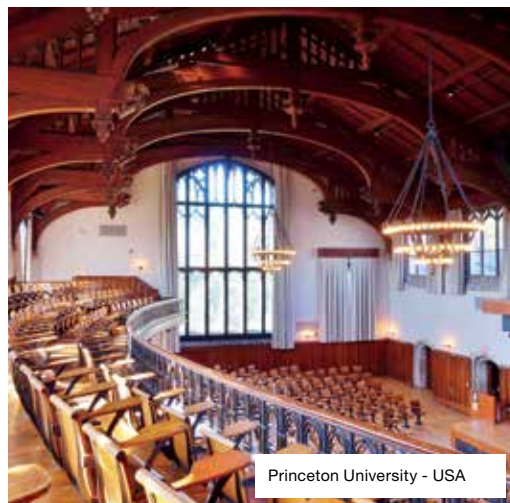
—

### SMART ACCESS

No costs from lock replacement from lost keys. Saves valuable time and resources across the organization.



DC Tower I- Vienna, Austria



Princeton University - USA

## COMMERCIAL

SALTO solutions are in use around the world in many types of office buildings, with retailers of all types, banks and insurance companies, and in manufacturing and industrial sites where they provide security, access control and staff and workforce management.

### KEY BENEFITS

**Efficiently use the natural movements** of different groups of users within and across the individual areas of the facility.

**Extend security and audit trail information to access points** throughout your building: from office doors to data cabinets to parking gates.

**Optimize the use of individual areas of the facility** by flexibly changing access plans easily to facilitate the individual programming of certain installations for conferences and special events.

**Seamless integration** with Physical Security Information Management Systems (PSIM) and building automation systems. Makes it easy for the facility owner to add SALTO security to its existing systems.

## EDUCATION

SALTO solutions are in use around the world in educational environments including universities, university housing, schools, research institutes, academies, kindergartens and more where they provide security, access control and campus management.

### KEY BENEFITS

**Differentiate easily who has access and when** to different places.

**Distinguish access not just by physical location but also duration**, easily managing access for short-term guests, i.e., conference attendees, contract and temporary workers, as well as staff and students.

**Integration** of access control along with other campus services.

**Flexibility** of the system lets you change access plans easily.

**In emergency situations**, local lockdown feature allows authorized users to put SALTO electronic locks into stand-alone lockdown mode.





## HEALTHCARE

SALTO solutions are in use around the world in healthcare environments such as hospitals and clinics, elderly homes and assisted living apartments, home care, social centres and more where they provide security, access control and resident and staff management.

### KEY BENEFITS

**Providing a safe and convenient environment** for employees, patients, visitors and external staff.

**Differentiate easily who has access**, when and for how long to different places.

**Extend the security of your access plan** to include even mobile workers easily and without sacrificing productivity.

**Protect** against theft of drugs, pharmaceuticals or personal belongings.

**Providing clean and aseptic surroundings with BioCote®** antimicrobial finish based on silver ion technology.

## GOVERNMENT

SALTO solutions are in use in all types of public administration buildings, such as town and city council facilities, state and federal administration, police and court facilities, ministries, parliaments, military bases and more where they provide security, access control and personnel management.

### KEY BENEFITS

**Separate public and restricted areas in your access plan** by differentiating easily who has access and when to such different places.

**Optimise the use of public access areas** by employing the flexibility of the system to change access plans easily.

**If an emergency requires** it, utilize lockdown functionality to help bring control to the situation.

**Employ heavy-duty locks for high traffic doors** that meet government requirements.

**Establish flexible and secure distribution** of access rights for specified areas.



Heathrow Airport - London, UK



Juventus Stadium - Torino, Italy

## TRANSPORTATION

SALTO solutions are in use around the world in airports, train, metro and bus stations, ports and ships, warehousing and distribution centres and more where they provide security, access control and passenger and employee management.

### KEY BENEFITS

**Set access rights that distinguish between public, semi-public and restricted areas** for diversified buildings and locations.

**Establish access rights for different places** such as transit areas, parking areas, maintenance areas, etc.

**Provide access, including to decentralised facilities,** with the same credential used at the main location.

**Employ a reliable and intuitive access control solution** developed for hard use in high traffic areas like public main entrances, parking and maintenance areas.

**Protect against wrongful allegations of and between staff members** and create a more positive and safe work environment with the objectivity of an audit trail.

## SPORTS FACILITIES

SALTO solutions are in use in a wide variety of leisure and entertainment facilities including sports centres and stadiums, swimming pools, health clubs, cinemas and theatres, museums, amusement parks, restaurants and more where they provide security, access control and visitor and staff management.

### KEY BENEFITS

**Integrate access control,** cashless vending, hotel accommodations and other services on one credential.

**Optimize the use of special facilities by changing access plans easily,** and thereby facilitating the individual programming of certain installations for conferences and special programmes.

**Reliable and advanced access control solution** developed for hard use in high traffic areas like public main entrances and locker areas.

**Wide range of carriers to suit just about any kind of need,** including waterproof credentials and user's smartphone.

# SALTO SPACE TECHNOLOGY PLATFORM

## ACCESS CONTROL FOR SMARTER BUILDING MANAGEMENT

SALTO's SPACE access control technology platform is designed to give end users ultimate freedom of choice regarding system layout, type and number of access points as well as level of security. In addition, SALTO easily adapts to changing requirements and can deliver scalability no matter what the project size.

Having one of the broadest product portfolios in access control worldwide, SALTO SPACE can fulfill virtually every technical and functional requirement. Thus, access control solutions by SALTO can encompass almost every access point in a building and its perimeter.



### **SVN** STAND-ALONE NETWORK

Innovative, wire-free technology allowing stand-alone electronic locks and cylinders to read, receive and write information via its operating smart cards.



### **BLUEnet** WIRELESS NETWORK

Access control system is networked through Bluetooth RF and is especially designed for doors where real-time control is required.

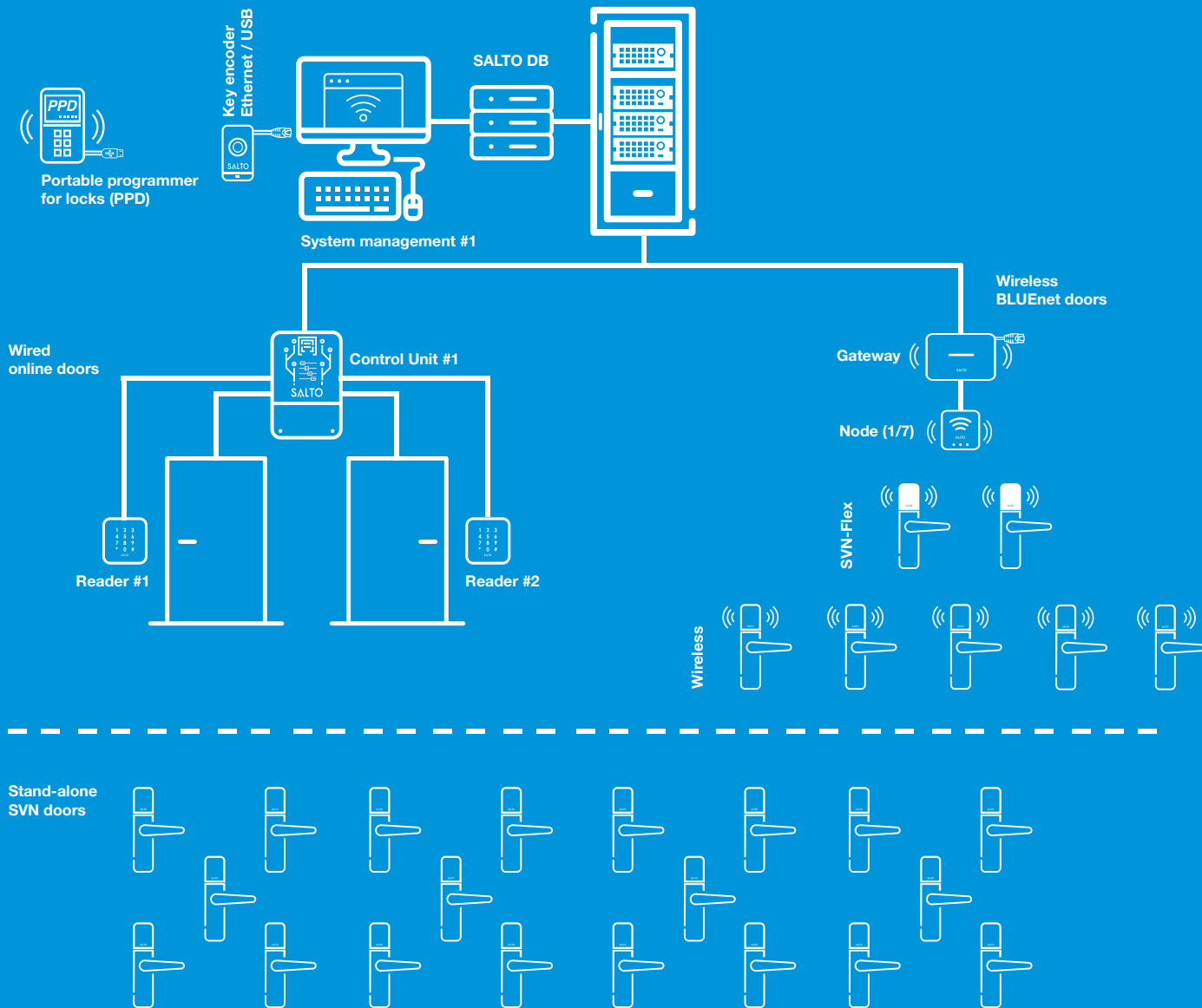


### **JustIN MOBILE** MOBILE ACCESS

Mobile technology makes it easy and secure to incorporate smartphones as a part of your access control solution.



SYSTEM ARCHITECTURE:



**PROACCESS SPACE MANAGEMENT SOFTWARE**

ProAccess SPACE access control management software provides an intuitive user-centered software interface that makes it simple and secure to incorporate access control for any type of building size or user need. It's powerful and flexible software allowing each system operator to set up their own preferences: capabilities and security level, language settings and others.

SALTO's SPACE platform offers several ways to integrate with third-party systems. This includes interfaces and APIs for connecting SALTO smart lock technology to video surveillance, vehicle access, biometrics, time & attendance, escape door control systems, intrusion alarm, and many more.

**MAIN FEATURES AND BENEFITS**

**Manage and secure your building's access plan for all your facilities right from your desk.** SALTO web-based and mobile access control technology makes it simple to manage and configure your building access plan.

**Designed to be easy and intuitive,** allowing system administrators to manage doors and user keys in just a few easy steps, and in real-time.

**Advanced access control capabilities.** Access control technology platform designed to give end users ultimate freedom of choice regarding system layout, type and number of access points as well as level of security.

**Secure and smart.** SVN data-on-card, BLUEnet Wireless and Justin Mobile access technology embedded onboard every access point around the building.



SVN

STAND-ALONE  
NETWORK

# SALTO VIRTUAL NETWORK (SVN) DATA-ON-CARD TECHNOLOGY

## STAND-ALONE NETWORKED LOCKING SYSTEM

The SALTO VIRTUAL NETWORK (SVN) is an easy-to-use system that integrates all physical security needs through networked, stand-alone, battery-operated smart locks. The SVN platform provides the most up-to-date user access information for virtually all doors in a facility.

This innovative, wire-free technology allows stand-alone electronic escutcheons to read, store and write information via its operating smart cards. This data is captured from the user's key at wireless networked electronic locks / cylinders or online IP SVN access points located at strategic points around the building.

The "updating access points" download and revalidate user-related access plan information that is then used to permit or deny access.

Manage and secure access control for all of your facilities right from your desk. Check battery status (to optimize maintenance) and user event information in just a few easy steps.

## MAIN FEATURES AND BENEFITS

**Cost-effective, quick and easy installation** to upgrade the traditional mechanical key-operated door locks without having to replace the door and with no hardwiring required.

**Enhances security for any type of doors**, eliminating key management issues and users' authorization changes in real-time from any access point.

**Update and modify user access rights from any defined access point.** Eliminates the need for users to go to specific doors to update / revalidate their expired key or change their access plan.

**Control and manage all stand-alone access points** remotely from one or more workstations.

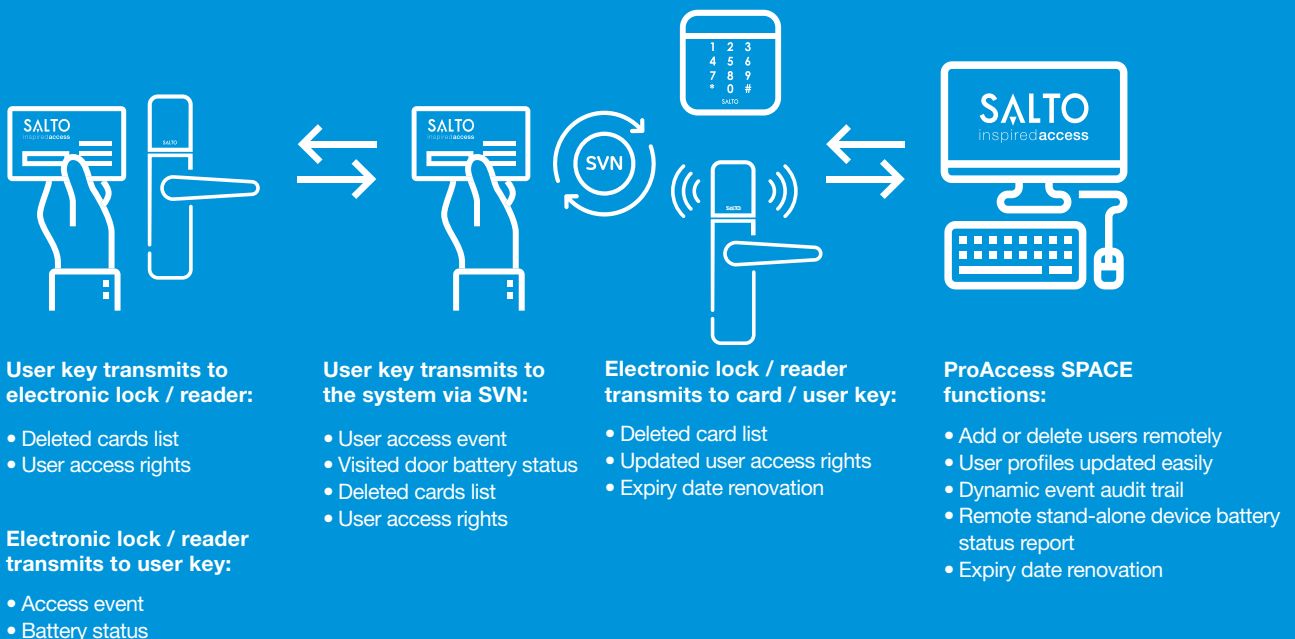
**Easy maintenance**, battery low warning sent for maintenance.

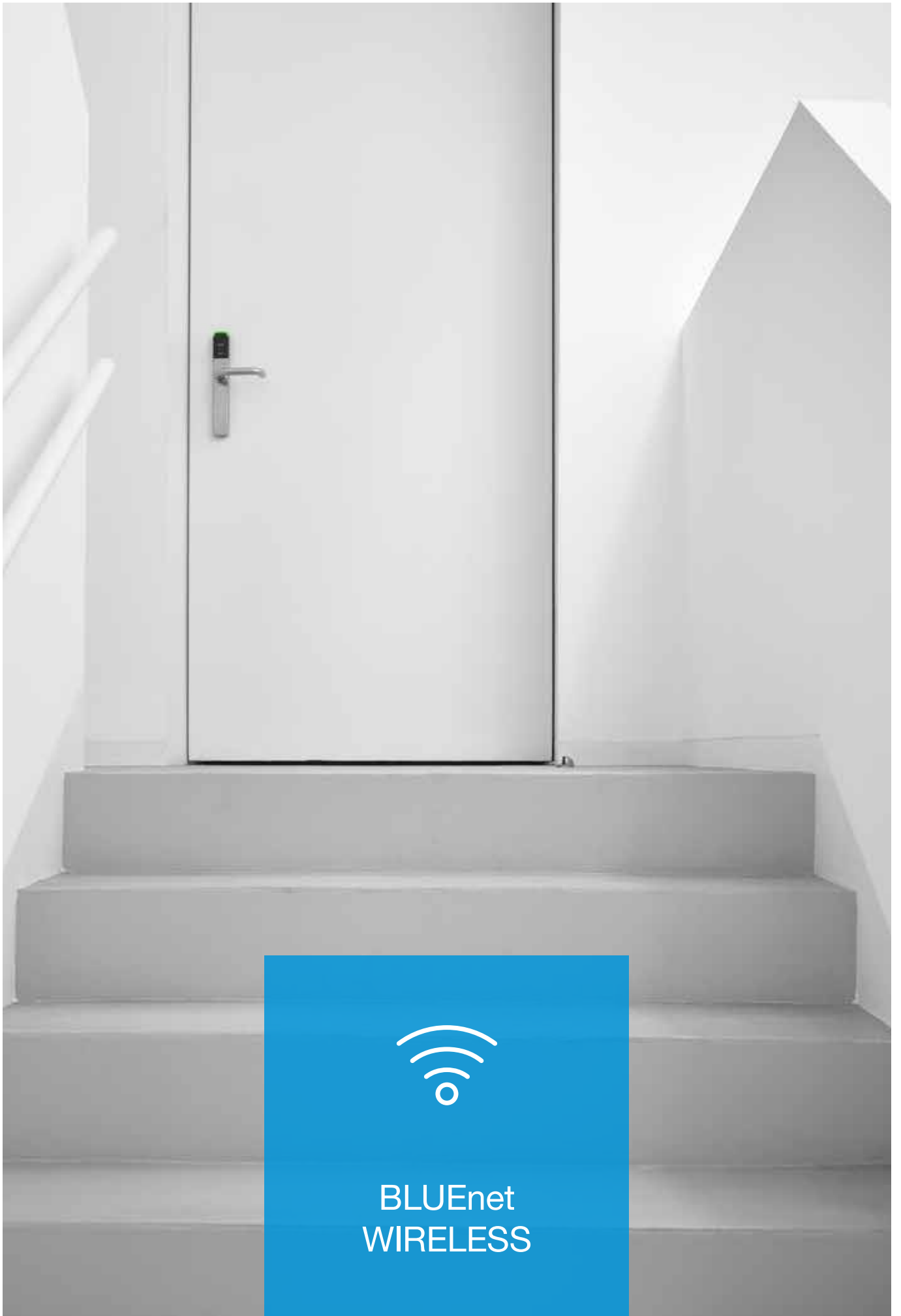
**More than 10 different opening modes** to suit your needs.

## SECURE

- In case of a power failure, the system keeps functioning because it's a stand-alone electronic locking system.
- Emergency openings can be performed through the PPD.
- Communication between the carrier, the physical network and the electronic door lock is encrypted and secured.

## HOW IT WORKS





# SALTO BLUEnet WIRELESS REAL-TIME TECHNOLOGY

## FLEXIBLE AND SECURE REAL-TIME MANAGEMENT

SALTO BLUEnet Wireless has been developed to meet the highest demands related to security and ease. This access control system is networked through Bluetooth RF and is especially designed for doors where real-time control is required.

A wireless access control solution based on SALTO BLUEnet wireless communication permits electronic locks to update the user's keys and to provide real-time door monitoring. This enhances the performance and capabilities of the SALTO Virtual Network.

SALTO provides an access control technology that allows stand-alone SALTO BLUEnet wireless locks to update, store and send the latest access information from the user's smart keys throughout the building wirelessly and remotely.

SALTO BLUEnet can be installed as an independent system or can complement SALTO Virtual Network (SVN) in areas of a building where real-time control is required.

## MAIN FEATURES AND BENEFITS

**Wireless electronic locks provide better cost, convenience and aesthetics than a wired solution**, achieving wired system benefits without the cost of hardwired systems.

**If radio frequency is interrupted or breaks down**, the access system will continue to work, as the virtual network of the battery-operated locks remains operational through SALTO SVN.

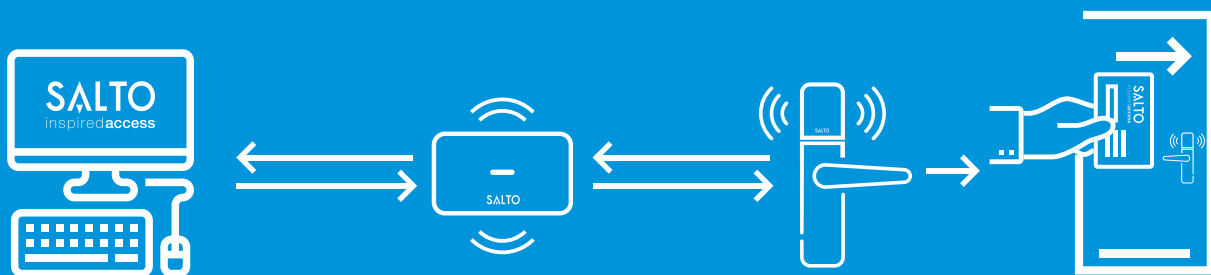
**Wireless network communication architecture:** One gateway can communicate with 7 nodes. Each node can operate up to 16 doors, with a maximum distance of 16m between the lock and the node. All by using one single IP address.

**Designed for easy integration into existing access control systems**, SALTO BLUEnet Gateways, nodes and repeaters connect to the system using Ethernet connectivity.

## ADVANCED FEATURES AND FUNCTIONS

- Advanced security with standard encryption communications.
- Escutcheons and cylinders receive blacklist information and remove cancelled keys from the system in real-time.
- Receive audit trail information in real-time.
- Real-time door control: This includes door alarm, intrusion alarm, single lockdown and remote door opening.
- Real-time battery control enables maintenance to view escutcheon power status in real-time.

## HOW IT WORKS



### ProAccess SPACE functions:

- Access event
- Key cancellation
- Door monitoring
- Graphical mapping
- Battery status
- Remote emergency opening
- Lockdown in case of emergency situation
- Opening function mode

### Gateway transmits to cylinder/escutcheon:

- Deleted card list
- Updates to the escutcheon or cylinder

### Electronic lock / cylinder transmits to gateway:

- Access event
- Battery status
- Intrusions alarm





# SALTO VIRTUAL NETWORK (SVN) ONLINE NETWORKED TECHNOLOGY

## ONLINE NETWORKED LOCKING SYSTEM

The SALTO Virtual Network (SVN) online networked locking system is a state-of-the-art IP-based access control solution for applications requiring high levels of security.

The exchange of information via a user's contactless smart key and online access points is secured and encrypted. The online SVN is a data-on-card system based on a patented read/write technology. In SVN, all user-related access information is stored on ID credentials which act as carriers. The access rights are updated at hardwired online IP access points.

Advanced online features such as monitoring your building's graphical map, IP reader integration (long distance reader for vehicle access, fire alarm systems, biometric access control readers, etc.), trigger an alarm event engine module to further extend the advanced capabilities of the SALTO cutting-edge online access control system.

## MAIN FEATURES AND BENEFITS

**Reliable, high quality systems:** Quickly update user's access permissions and access levels at the click of a button.

**Architecture designed to adapt and grow with your needs:** Control any type of building application, from just one door up to hundreds of doors, with thousands of users.

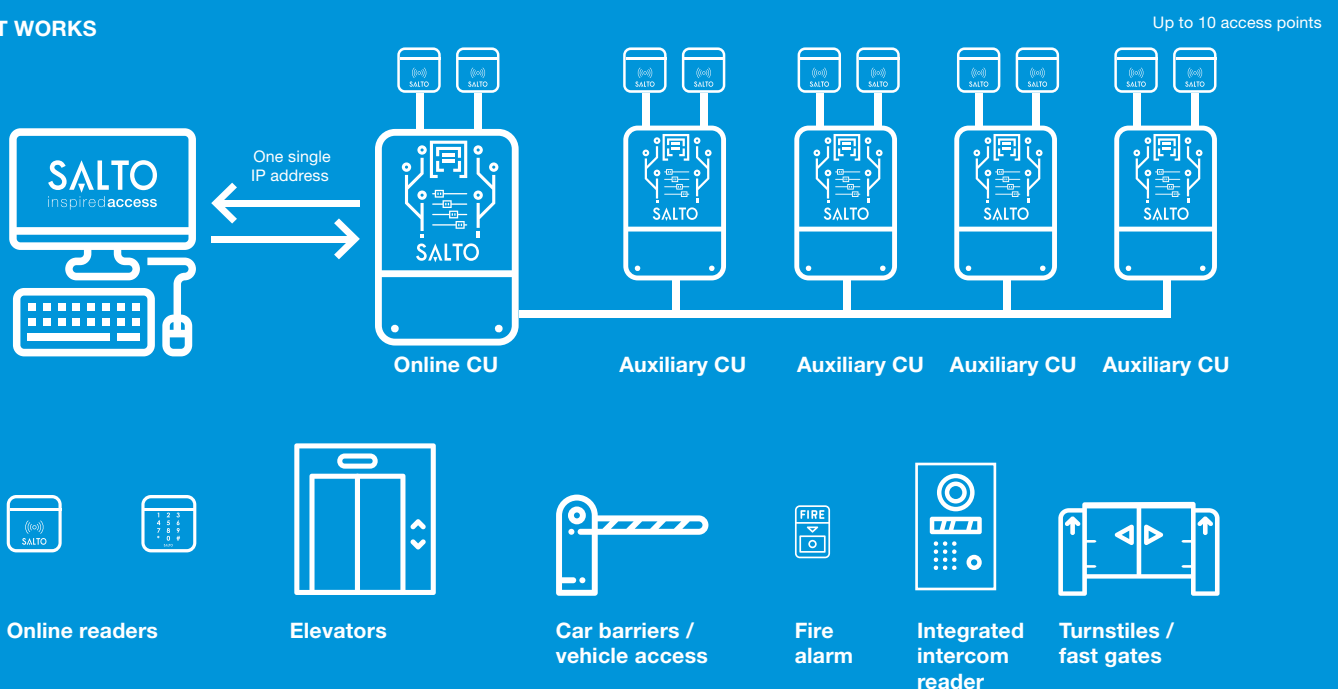
**Control and manage multiple doors** through one Ethernet connection, operate up to 4 auxiliary online controllers and up to 10 access points with a single IP address.

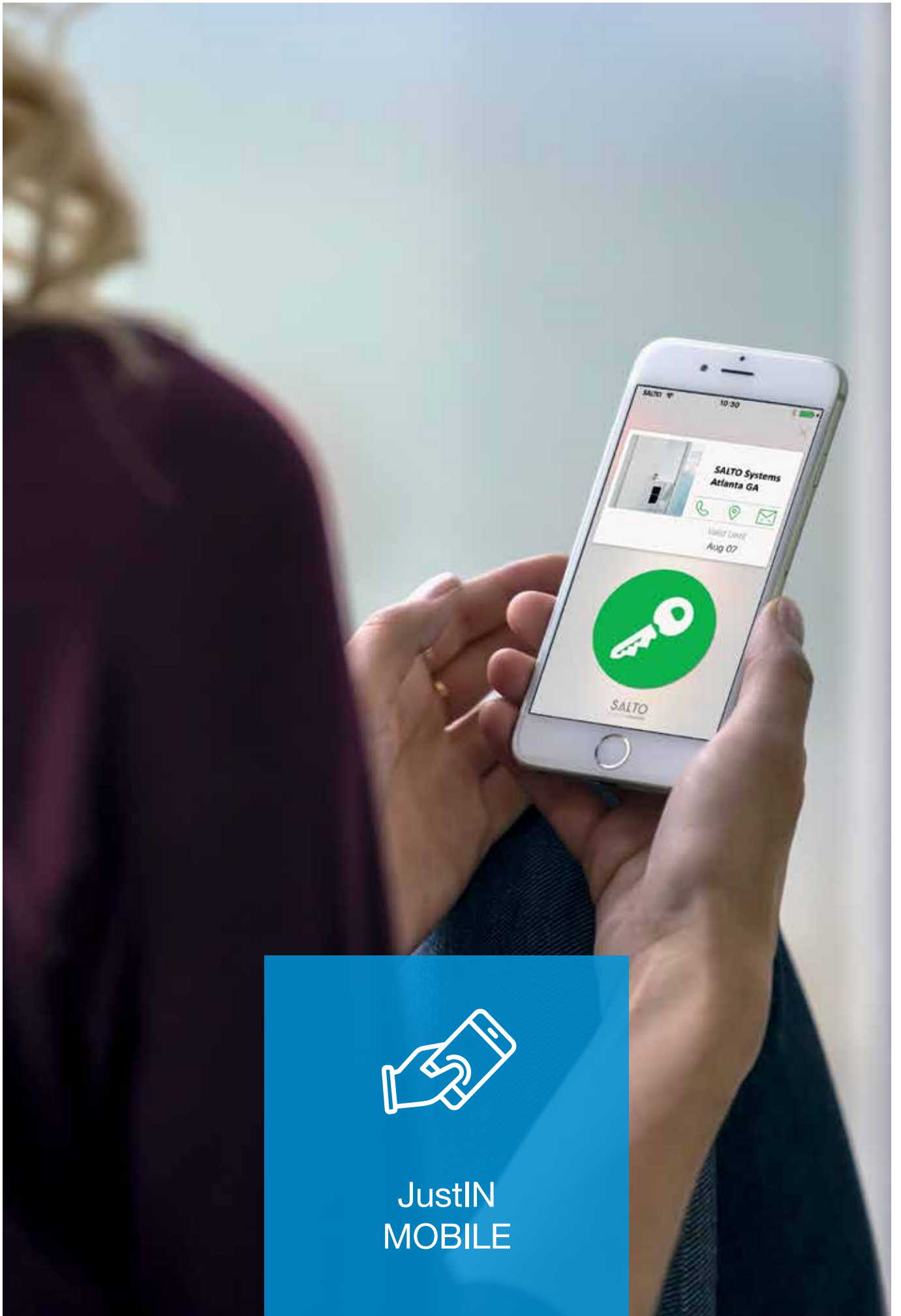
**Event reporting:** Online real-time audit trail showing who is where and when. Monitor all your users, staff and visitor movements on site, from your computer.

**Link with your security systems:** Easy-to-extend security beyond door control. You can integrate biometric or vehicle access readers, fire alarm systems or third-party security systems directly to your access control system.

**Email and text alerts** can be set up to alert you if a specific event has occurred.

## HOW IT WORKS





JustIN  
MOBILE

# SALTO JustIN MOBILE MOBILE ACCESS TECHNOLOGY

## MOBILE-BASED ACCESS CONTROL SOLUTION – BLE & NFC

SALTO's JustIN mobile technology makes it easy and secure to incorporate smartphones as a part of your access control solution. Using SALTO's JustIN technology, these solutions easily and flexibly bring better security and usability to both end users and system managers. End users gain convenience and productivity without sacrificing security, while facility managers distinguish their property with cost-effective solutions that clients truly value.

## MAIN FEATURES AND BENEFITS

**Use mobile phone as a door key.** Access control systems compatible with NFC, BLE and RFID ID technologies.

### USER FRIENDLY

- End user decides how to receive a key: as a JustIN Mobile or as a physical credential.
- Extend access or change access rights instantly and remotely.
- Works with a user's existing iOS or Android smartphone.
- JustIN Mobile app lets an end user receive their key online.

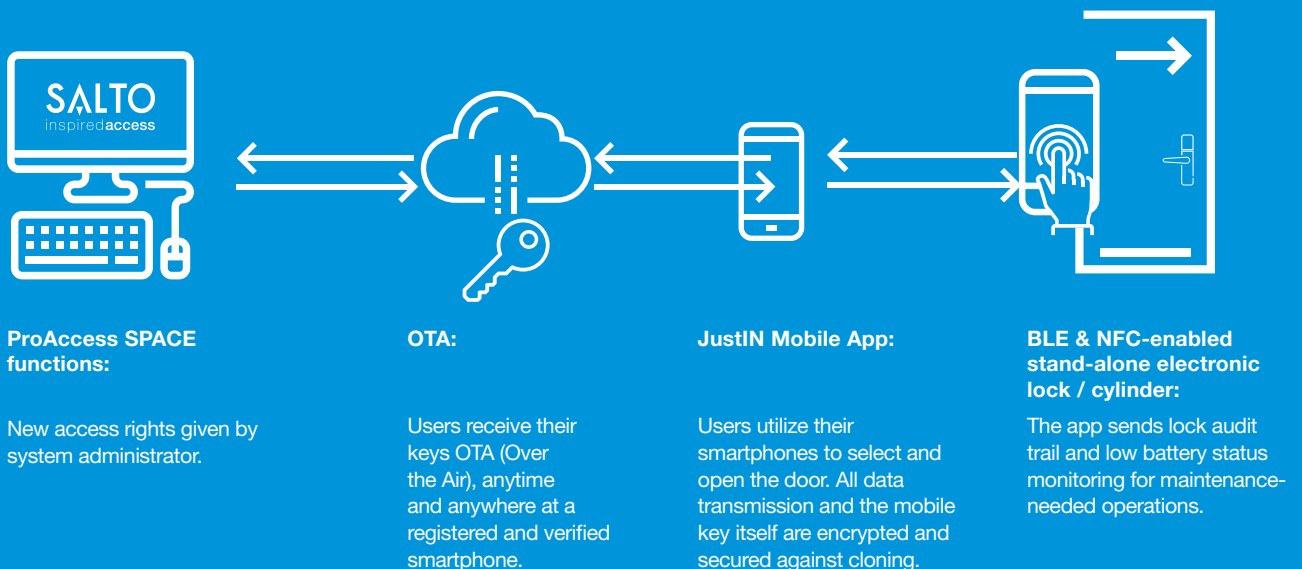
### SECURE

- Smartphone authentication technology for verifying a mobile user's identity: PIN / Fingerprint.
- AES 128 bit encryption and secure opening procedure with key received securely encrypted using SSL.
- Instant key updates or key cancellations.
- Real-time access rights changes, audit trails, and blacklisting lost keys.
- For a higher security level, no information is stored in the SALTO JustIN cloud, used only as a temporary bridge.

### SDK

iOS and Android software development kit (SDK) for the development of apps for JustIN Mobile access operating technology to make it easy and secure to incorporate smartphones as a part of your access control solution.

## HOW IT WORKS



# ELECTRONIC LOCKING PLATFORM

## SMART LOCKS DESIGNED TO BE SECURE

An easy-to-use electronic locking platform that integrates all your physical security needs through networked, stand-alone battery operated smart locks, giving you all the latest user access information for virtually all of the doors in your facility.

SALTO offers a broad range of hardware, making smart access to any door possible. Designed to cover every access point type and with the latest technologies to protect against advanced attacks, SALTO's electronic locking platform technology leverages industry-leading security practices, including advanced encryption to provide users a secure and seamless keyless and mobile experience. For added protection, user access plans are updated daily, thanks to SVN data-on-card core networked technology.



### ELECTRONIC ESCUTCHEONS

With a large variety of models, electronic escutcheons fit virtually any door. They are also suitable for use at fire doors and emergency exits.



### ELECTRONIC CYLINDERS

Extensive range of compact-sized electronic cylinders and profiles designed for doors where fitting an electronic escutcheon is not possible or required.



### READERS AND DOOR CONTROLLERS

A complete range of readers and controllers facilitate the expansion of SALTO access control benefits to every door, to provide your facility with a complete security solution.





### **DOOR COMPATIBILITY & STANDARDS**

Totally wire-free and compatible with most European, Scandinavian and ANSI mortise locks and tubular latches.



### **DESIGNED TO COVER EVERY ACCESS POINT**

Extensive range of electronic locks, cylinders and readers to cover all the needs of any type of building.



### **EASY TO INSTALL**

Designed to be installed in doors with existing locks, with no need for additional modifications or wiring.



### **SECURE MOBILE ACCESS**

Complete mobile-compatible electronic locking platform makes it easy and secure to incorporate smartphones as a part of your access control solution.



### **SECURITY STANDARDS & CERTIFICATION**

Industry security standards ensure the quality and durability of locks with extensive tests and certificates, defined benchmarks of operation and security.





**XS4 ONE | EX7XX**

The SALTO XS4 One is the evolution of the Original model with a built-in, totally new reader available in two colours. This version is compatible with most European mortise locks and cylinders.

**XS4 ONE - DIN | EX7XX**

The SALTO XS4 One DIN version escutcheon is specially designed to meet the requirements of DIN18250 and 18251 standard doors prepared for DIN 18250 standard mortise locks.

**XS4 MINI | EX150**

The XS4 Mini for European DIN mortise locks has been designed with the requirements of DIN 18251 standard doors prepared for DIN 18250 standard mortise locks, and is compatible with the DIN 18251 standard fixing instructions.



# SALTO XS4 ELECTRONIC LOCKS

## DESIGNED TO FIT YOUR BUILDING'S NEEDS.

With a large variety of models, XS4 electronic escutcheons blends attractive design and sophistication with strength and smart technology for your building. Applicable to existing standard doors, making it simple and fast to upgrade the traditional knob set without having to replace or drill the door.

All are totally wire-free and networked through SALTO Virtual Network (SVN), BLUENet Wireless network for access control in real-time and compatible with mobile access. Compatible with most European, Scandinavian and ANSI mortise locks and tubular latches.

High security protection via high resistance, hardened anti-drill plates to protect wiring and reader area. Additional protection is provided by hardened axes and floating steel balls in the handle area.

## MAIN FEATURES AND BENEFITS

**Easy to retrofit and installation** of a new SALTO XS4 escutcheon is quick and simple by changing handle set.

**Advanced core technologies:** SALTO SVN, BLUENet Wireless network and JustIN Mobile capable.

**Works with all popular smart keycards** covering the mainstream RFID technologies.

**Communication** between the carrier, the physical network and the electronic lock is encrypted and secured.

**Battery-operated.** Low battery status information is obtained from users' keycards (SVN) or wirelessly (BLUENet).

**Models for both inside and outside use available.** Outside models are IP55 rated to endure the elements.

**Wide range of finishes and reader colours:** satin stainless steel, polished stainless steel, antique brass, satin brass (PVD), polished brass (PVD) and black. Available with antimicrobial BioCote® coating.

### XS4 ORIGINAL | EX4XX

The SALTO XS4 Original narrow body version is specially designed to fit most Euro profile doors, even narrow profile framed doors. This version also works with the majority of European mortise locks and cylinders.



### XS4 ORIGINAL - KEYPAD | EX6XXK

The SALTO XS4 Original electronic lock with keypad increases security and control, as it offers the choice of three forms of authentication to grant access.



### XS4 GLASS DOOR | EX6XXGD

The XS4 DIN glass door lock has been specially designed for use with DIN 18101 standard glass doors. Its steel body is stylish and modern and its unique 'sandwich body' construction makes it easy to install, without having to replace the door.





# ÆLEMENT DESIGN-LOCKS

## DESIGNED TO MEET AND EXCEED EVERY PROJECT REQUIREMENT

The ÆElement is an RFID lock that allows you to integrate all your physical security needs into one stylish, energy efficient, reliable, wire-free system by combining technology and design.

The minimalistic reader design, available in two beautiful finishes that work for any architectural environment, looks chic and discreet on any door.

ÆElement offers a wide choice of functional and stylish handle designs and roses suitable for use on any type of door. Various finish options are available to allow for contemporary or classic styling and to perfectly complement any design and décor.

And to go further in design, ÆElement can be combined with designer handles like Colombo. Colombo by SALTO is the perfect choice when a distinctive design flair is needed.

## MAIN FEATURES AND BENEFITS

### Wide range of finishes and handle models available.

Functional and stylish handle designs and roses suitable for use on any type of door.

**Advanced core technologies:** SALTO SVN, BLUEnet Wireless network and JustIN Mobile capable.

**Communication** between the carrier, the physical network and the electronic lock is encrypted and secured.

**Battery-operated.** Low battery status information is obtained from users' keycards (SVN) or wirelessly (BLUEnet).

**DIN and ANSI standard** mortise locks compatible.\*

**Door privacy function** option through privacy button or thumbturn on the inside (for hotel industry).

### ÆELEMENT FUSION | AFX

Electronic lock with a sleek reader accentuated by an interactive light ring, providing a minimalistic design. ÆElement Fusion eliminates lock hardware on the door by encasing all electronic components inside the door itself.



### ÆELEMENT | AEX

The minimalistic design of the ÆElement RFID reader complements any door and can be combined with a wide range of designer handles. Designed to be compatible with DIN standard and ANSI mortise locks standard profile doors.







**SALTO NEO CYLINDER | NXE**

The SALTO Neo Cylinder offers value far beyond security. Of course, upgrading a mechanical door to electronic access control enhances security, but the SALTO Neo Cylinder provides greater control of the door.

It offers end users mobile keyless access to any access point and wireless access to audit trails, reports, alerts, and user access rights updating with the latest SVN-Flex access control technology.



**SALTO Neo EU** profile half cylinder.



**SALTO Neo EU** profile with mechanical inside knob.



**SALTO Neo EU** profile double cylinder with inside electronic knob control.

# SALTO NEO ELECTRONIC CYLINDERS

## DESIGNED FOR ANY KIND OF STANDARD DOORS

The compact SALTO Neo Cylinder is designed for doors where fitting an electronic escutcheon is not possible or required and can be installed on standard doors, server racks, gates, cabinets, electric switches, sliding doors, and more. It's available in an extensive range of models to suit almost any kind of door across the globe – from Europe to Scandinavia, ASIA to the Americas, and Australia.

SALTO Neo Cylinder technology allows us to introduce customers, systems operators, and installers to new experiences and to connect keyless access. The SALTO Neo Cylinder has more functionality and performance capability, allowing businesses to connect to their on premises network via advanced SVN technology or the cloud with the SALTO KS cloud-hosted access management platform.

For any building, function, or model, SALTO offers the perfect electronic cylinder to fit any door. The SALTO Neo Cylinder delivers an easy-to-use electronic locking platform that integrates all of the physical security needs through smart, wireless, and battery-operated smart cylinders, giving system operators all the latest user access information for virtually all of the doors in a facility.

### SALTO NEO SERVER RACKS | [NXE9](#)

The SALTO Neo half cylinder is specially designed to fit most swing handle\* server racks. Ideal for use on applications where control of the operation of the rack is needed, enhancing the control and security of access to the server racks.



### SALTO NEO CAM LOCK | [NXCL](#)

The SALTO Neo Cam Lock electronic cylinder is specially designed to fit most cabinets equipped with a cam locking mechanism.



## MAIN FEATURES AND BENEFITS

**Simple installation** and adaptable with any previous mechanical cylinder model. No wiring or drilling work required.

**Wide range of models:** European profile cylinder, UK oval profile cylinder, mortise cylinder, Swiss round profile cylinder, RIM exterior cylinder, Scandinavian profile cylinder, etc.

**Advanced core technologies:** SALTO SVN, BLUEnet Wireless network and JustIN Mobile capable.

**Easy-to-use and highly secure keyless technology** provides instant and reliable access to any door. Combine the advantages of RFID, BLE (Bluetooth Low Energy) and NFC technologies.

**Communication** between the carrier, the physical network and the electronic cylinder is encrypted and secured.

**Battery-operated cylinders.** Tested up to 110,000 operations on a standard set of batteries (4 x LR1). Low battery status information is obtained from users' keycards (SVN) or wirelessly (BLUEnet).

**Models for both inside and outside use available.** Outside models are IP66 rated to endure the elements like water and dust.

**Wide range of finishes and reader colours:** satin chrome, polished chrome, polished bright brass (PVD), satin brass (PVD), black satin. Available with antimicrobial BioCote® coating.



**SALTO WALL READER | [WRDBEXK](#)**

The SALTO Wall Reader incorporates the cutting-edge design standard in this technological powerhouse. The reader with optional keypad allows for the additional use of a PIN keypad option.



**SALTO MULLION READER | [WRDBOMX](#)**

The SALTO slim wall reader for flush mounting has been specially designed to fit lifts, sliding doors or electronic gate doors that have a narrow profile frame, and where there is insufficient space to install a standard wall reader.



**SALTO MODULAR READER | [WRMXXXX](#)**

The SALTO Modular Wall Reader provides your facility with a complete security solution for any kind of installations, even in adverse and harsh environments thanks to the ability to install it in combination with the antivandalic frame.



# SALTO WALL READERS & DOOR CONTROLLERS

## CUTTING-EDGE ONLINE ACCESS CONTROL SYSTEM

SALTO offers a wide range of wall readers that, in combination with SALTO door controllers, enable the expansion of SALTO access control benefits to doors where a stand-alone electronic lock cannot be fitted, i.e., barriers, lifts, sliding doors or electronic gates, where control must be boosted by online real-time access control.

SALTO door controllers has substantial technological advances and can be configured as 2 different doors or one door reader in and reader out locking, that allows management of up to 10 doors from one IP address.

All door controllers enable the integration of SALTO access control with building management systems, e.g., for triggering lifts or post boxes.

## MAIN FEATURES AND BENEFITS

**Designed to fit standard electric boxes**, making the installation quick and easy.

**Modern design** with clear LED signaling, includes latest electronics and is completely sealed and designed for heavy-duty outdoor use.

**Wide range of accessories**, e.g., special bases for flush mounting, stainless steel external case for use in harsh weather conditions or stylish pedestal for places where readers and controllers normally cannot be fitted.

**Advanced core technologies:** SALTO SVN network and JustIN Mobile capable.

**Works with all popular smart keycards** covering the mainstream RFID technologies.

**Communication** between the carrier, the physical network and the reader is encrypted and secured.

**For outside use – IP66 rating.** Reader is housed in a two-piece, weatherproof secure electronics potted enclosure.

**Wide range of finishes and reader colours:** Black, white and silver finishes; conical or flat square shape with rounded corners.

### SALTO PANEL READER | WRDXP

Designed to be integrated behind lift panels, door intercoms, electric switches or turnstiles and gates. These models need a window nearby, which is necessary for reader antenna operation.



### LONG-DISTANCE READER | WRLUD

Fast and reliable long range identification solution automatically identifies user's flow in any weather condition without having to present the card on the reader. Suitable for car parks and free flowing vehicle access control.



### SALTO CONTROLLER | CU42XX

SALTO's control unit makes it even easier to bring superior access control to your facility, thanks to the ability to control and manage multiple doors through one Ethernet connection and one IP address.





# XS4 LOCKER LOCK

## SMART LOCK DESIGNED FOR LOCKERS

The electronic XS4 locker lock provides high level security to a wide range of lockers, cupboards, cabinets, boxes, etc., by integrating it into the SALTO wire-free electronic access solution.

Its new electronics permits effectively to extend real-time, online and mobile enable smart electronic access control to lockers and cabinets allowing the usage of JustIN Mobile technology and SALTO BLUEnet wireless online technology through the same hardware.

The SALTO XS4 locker solution features an ergonomically designed, twist-operated locking handle that makes for easy use, even with wet hands. Their durable, wipe clean construction makes them highly resistant to chemicals, UV radiation and physical wear and tear ensuring a long lasting, smart appearance.

The battery pack, electronic components and locking mechanism are all located on the inside of the door, safe from potential vandalism or sabotage.

## MAIN FEATURES AND BENEFITS

**Simple installation** possible on many types of small and thin doors. Locker door thickness and handing adaptable on site.

**Advanced core technologies:** SALTO SVN, BLUEnet Wireless network and JustIN Mobile capable.

**Communication** between the carrier, the physical network and the electronic lock is encrypted and secured.

**Battery-operated lockers.** Low battery status information is obtained from users' keycards (SVN) or wirelessly (BLUEnet).

**Outer thumbturn with red/green indicator** indicating the availability of the locker, release managed electronically.

## OPENING MODES:

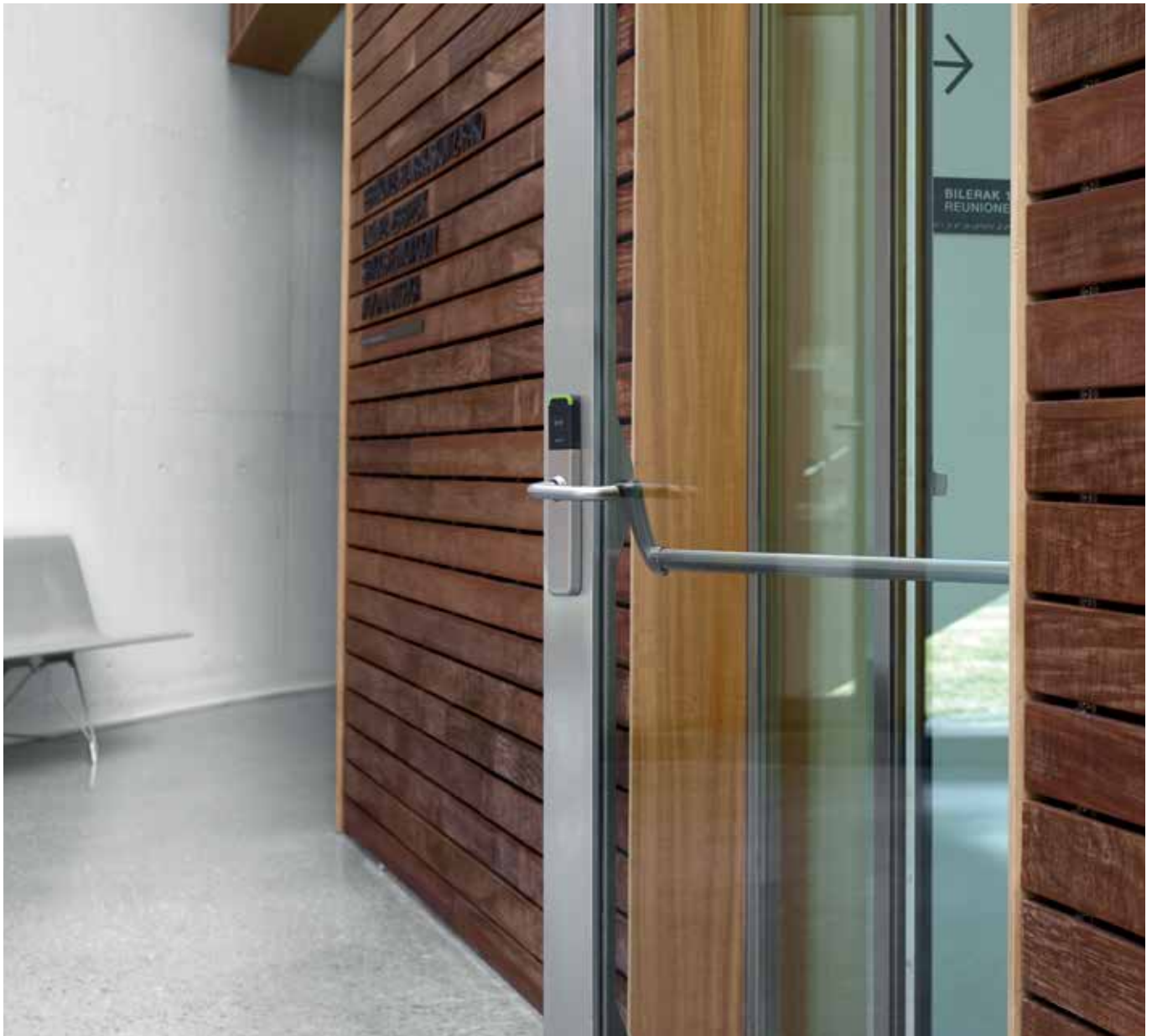
- **Fixed locker assignment:** A specific user ID keycard operates a specific locker lock.
- **Free locker assignment:** Any user ID keycard subsequently used to unlock a locker takes control.
- **Family option:** Multiple user ID keycards to operate a single locker lock.

## XS4 LOCKER | LX050

Designed to bring all the advantages of an electronic access control for lockers and cabinets. Perfect for controlling access to lockers, cupboards, cabinets, boxes and show cases, where access control and full audit trailing are required.







## RELIABLE DOOR SMART LOCKING SYSTEM

SALTO offers a wide range of mortise locks in order to ensure that the door is correctly locked. Whether you need ANSI mortise locks, Euro DIN locks for wooden doors or narrow profiles, Scandinavian locks, cylindrical cartridge latches or automatic locks with privacy and panic functions, SALTO has the locking system you need.

A complete range of mortise locks enable you to install SALTO electronic escutcheons and cylinders without compromising security.

### DIN EUROPEAN MORTISE LOCK | LE7S

DIN compatible mortise lock that offers a wide range of operation and function possibilities to improve access control with a reliable locking solution. Includes integrated electronic detectors.



### ANSI MORTISE LOCK | LA1T

Specially designed for those doors that need an ANSI mortise lock ANSI A 156.13 Grade 1 and a privacy function with a deadbolt for Hospitality purposes. Includes integrated electronic detectors.



# ADVANCED PANIC BAR SOLUTION & MORTISE LOCKS

## PROVEN TECHNOLOGY FOR SAFETY WITHOUT COMPROMISE

SALTO advanced panic bar solutions enable emergency exit doors equipped with panic bars to be controlled with an innovative stand-alone electronic locking system.

SALTO stand-alone electronic locks can be fitted, in combination with adaptor kits, to more than 60 leading panic bars from the most popular manufacturers, whether you have a mortise panic device or a RIM panic device.

## MAIN FEATURES AND BENEFITS

**Designed to be compatible with** most standard emergency exit doors on the market.

**Existing emergency exits can be retrofitted** and upgraded into an electronic stand-alone access control system.

**System composed of** a half escutcheon, a Kit Panic Bar (KPB) and the panic bar (can also be an existing one).

**Advanced core technologies:** SALTO SVN, BLUEnet Wireless network and JustIN Mobile capable.

**Communication** between the carrier, the physical network and the electronic lock is encrypted and secured.

**Works with all popular smart keycards** covering the mainstream RFID technologies.

**Battery-operated.** Low battery status information is obtained from users' keycards (SVN) or wirelessly (BLUEnet).

### XS4 PANIC BAR | [PBEX00](#)

The SALTO XS4 PBE900 combines the highest safety standards with ease of use. Its modern, aesthetic design makes it the perfect choice to complement any architectural style.



### XS4 PANIC BAR - PUSH BAR | [PBF110](#)

The SALTO XS4 PBF110 device is the emergency exit door's highest standard for security, with enhanced safety performance features. SALTO XS4 PBF110 series exit devices are UL listed, and are certified according to ANSI A156.3, 2001, Grade 1.



### XS4 PANIC BAR - ADAPTOR KIT | [KPBXX](#)

The XS4 SALTO KPBs (Kit Panic Bars) make it possible to fit stand-alone electronic escutcheons in combination with existing panic bars.





**SALTO NCODER | ECX0**

Compact device to manage system operator user key creation, visitor management and PPD data storage from a single smart and contactless secure management tool, for reading encoding and updating cards.

**SALTO PPD | PPD000**

The SALTO contactless Portable Programmer Device (PPD) is the messenger between the computer and the locks such as escutcheons or cylinders. It is used by the system administrator.

**CARRIERS | CREDENTIALS**

Reusable, contactless RFID smart cards for access control. Provides higher levels of security than traditional mechanical key management and additional applications can be implemented on the same ID user credential.



# PROACCESS SPACE MANAGEMENT SOFTWARE

## POWERFUL AND FLEXIBLE ACCESS CONTROL SOFTWARE MADE EASY

ProAccess SPACE software is a powerful web-based access control management tool that enables users to programme access-time zones, manage different calendars and view audit trails from each door.

ProAccess SPACE, brings together a superior level of flexibility and functionality with an easy-to-use, web-based interface and logic that enable the straightforward management of SALTO access control installations. Its user-friendly interface is simple to set up and configure, giving users the flexibility and control that today's modern access control systems require.

---

### VISITOR MANAGEMENT:

Issue visitor cards for a few hours, a few days or for anything in between, and all with a built-in cancellation date that will disable the credential automatically. Flexible and secure check-in and check-out system, collection and auditing of visitor data.

---

### PARTITIONS:

Department operator enables properties to be managed independently but while retaining shared access privileges. Individual buildings can be run by their own managers, controlling their own user's access rights.

---

### EVENT ENGINE MODULE:

Manage specific event-triggered actions and alarms. The intuitive wizard permits programming of any event audit trail or any event-triggered action through the CU42xxx inputs to automatically perform defined actions, such as activating CCTV recording, sending e-mail alert notifications, activating lockdown, etc.

---

### LOCKDOWN / EMERGENCY OPENING:

Effective automatic door system in case of emergency enables systems operators to make an emergency lockdown or open of a property in the event of a security incident.

## MAIN FEATURES AND BENEFITS

**100% web-based software** that facilitates the set-up, routine use and monitoring, as well as any updating and changing of access rights.

**Easy installation** process that includes a powerful SQL engine. Database protected by SQL authentication or Windows-based authentication.

**Multi-language and configurable interface** makes it easy to adjust the interface to the specific needs and security level of each operator.

**Can be managed or operated from different workstations** simultaneously without risk of database corruption.

**Possibility of multi-display** using different web screens.

---

### MATRIX FUNCTIONS AND LOCATIONS:

Combination of users to doors and their different functions can cause occasional keying problems when designing the access plan. Matrix function simplifies and streamlines the link between users and doors, making access planning simple and straightforward.

---

### ONLINE MONITORING:

Online event monitoring through web browser permitting real-time visibility of all events at online doors, showing who accessed what door and when, if a door has been left open, intrusions, etc. Total control, all in real-time.




---

### HOSPITALITY ADD-ONS:

Specific add-ons which allow hotel clients to easily control all their access and guest management needs with one easy-to-use system.



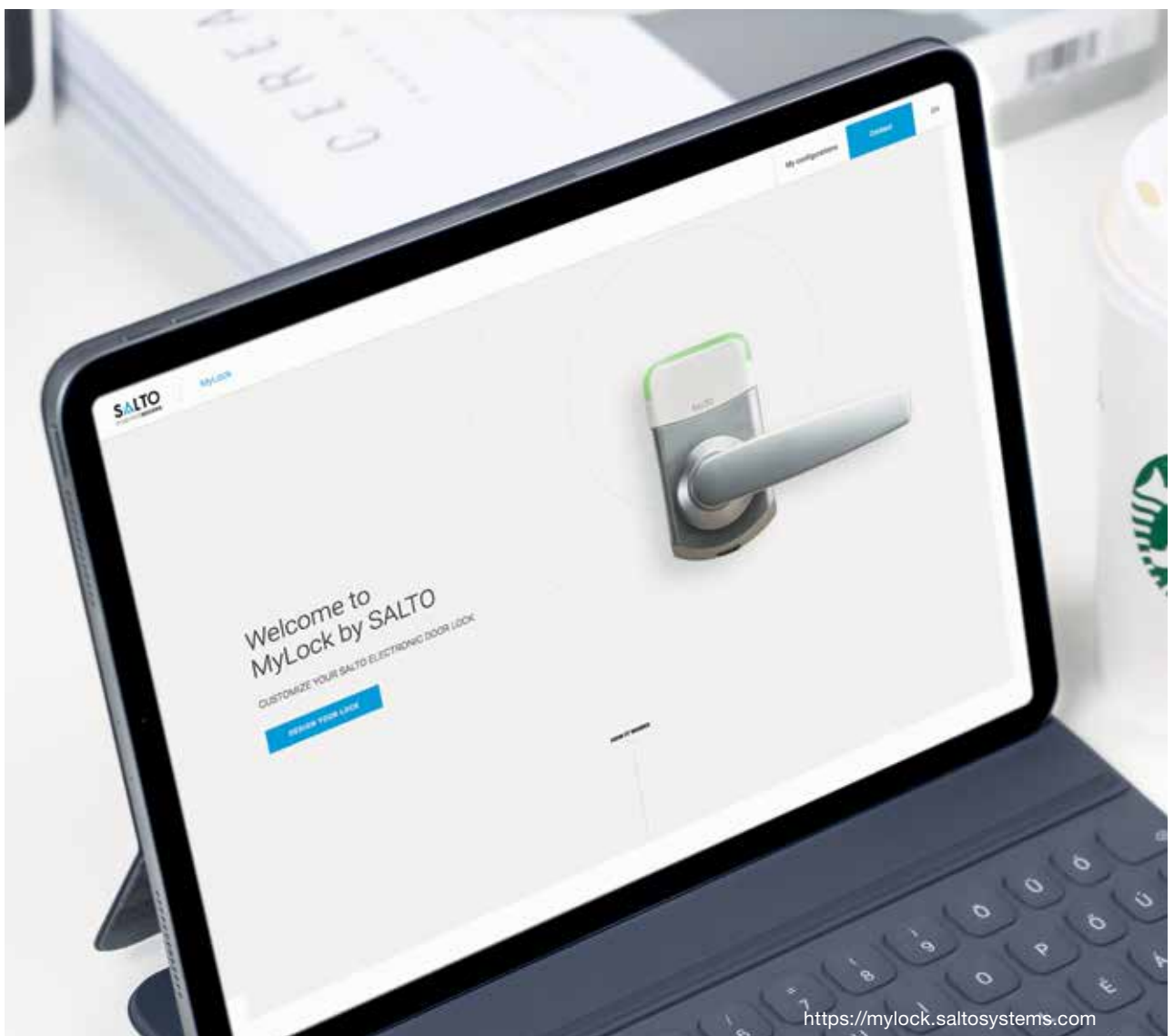
## BUILD YOUR OWN DOOR

### CUSTOMIZE YOUR ELECTRONIC DOOR LOCK WITH SALTO MYLOCK

Select an electronic lock model, door type and customize your SALTO door lock with a range of colours, finishes and handle options.

The innovative SALTO MyLock tool will allow for complete visualization and customization of the locking solutions chosen by the user. By accessing the web page, the user is able to select the door lock model online to configure and create a customized door by personalizing everything.

SALTO continues to innovate by launching SALTO MyLock, a unique tool for the access control industry.



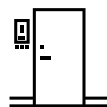
<https://mylock.saltosystems.com>



---

### CHOOSE YOUR ELECTRONIC LOCK MODEL:

Choose your favorite electronic lock model (ANSI, Euro or Scandinavian standards) to create your customized door and personalise everything.



---

### CHOOSE YOUR DOOR TYPE AND SELECT A HANDLE DESIGN:

Choose a door type, finish, handle design and lockset finish that match your door.



---

### DOWNLOAD AND SAVE YOUR SETTINGS:

Once the door configuration is complete, you can store and compare it against previously-configured door lock models or save it as a PDF.



---

### CONTACT US:

Send us your selection, ask us a question or just contact us for a demo.



The access control company you can rely on.

[www.saltosystems.com](http://www.saltosystems.com)

**SALTO**  
inspired access

**SALTO Systems HQ, Spain**

Oiartzun / Madrid, Spain

Tel.: +34 943 344 550  
email: [info@saltosystems.com](mailto:info@saltosystems.com)  
[www.saltosystems.com](http://www.saltosystems.com)

**SALTO Systems, UK**

Southam, United Kingdom

Tel.: +44 01926 811979  
email: [info.uk@saltosystems.com](mailto:info.uk@saltosystems.com)  
[www.saltosystems.co.uk](http://www.saltosystems.co.uk)

**SALTO Systems, USA**

Norcross GA / New York NY / Las Vegas NV, USA

Tel.: +1 770 452 6091  
email: [info.us@saltosystems.com](mailto:info.us@saltosystems.com)  
[www.salto.us](http://www.salto.us)

**SALTO Systems, Canada**

Vaudreuil-Dorion QC, Canada

Tel.: +1 514 616 2586  
email: [info.ca@saltosystems.com](mailto:info.ca@saltosystems.com)  
[www.saltosystems.ca](http://www.saltosystems.ca)

**SALTO Systems, Mexico**

Cancún, México

Tel.: +52 (998) 892 8752  
email: [info.mx@saltosystems.com](mailto:info.mx@saltosystems.com)  
[www.saltosystems.co.mx](http://www.saltosystems.co.mx)

**SALTO Systems, Colombia**

Bogotá, Colombia

Tel.: +57 320 924 3634  
email: [info.co@saltosystems.com](mailto:info.co@saltosystems.com)  
[www.saltosystems.com](http://www.saltosystems.com)

**SALTO Systems, Australia**

Notting Hill, Victoria, Australia

Tel.: +61 (0)3 8683 9782  
email: [info.aus@saltosystems.com](mailto:info.aus@saltosystems.com)  
[www.saltosystems.com.au](http://www.saltosystems.com.au)

**SALTO Systems, Middle East**

Dubai, United Arab Emirates

Tel.: +971 4399 5770  
email: [info.me@saltosystems.com](mailto:info.me@saltosystems.com)  
[www.saltosystems.com](http://www.saltosystems.com)

**SALTO Systems, France**

Nanterre, France

Tel: +33 (0)1 55 17 13 70  
email: [info.fr@saltosystems.com](mailto:info.fr@saltosystems.com)  
[www.saltosystems.fr](http://www.saltosystems.fr)

**SALTO Systems, Germany**

Wuppertal, Deutschland

Tel.: +49 (0)202/ 769 579-0  
email: [info.de@saltosystems.com](mailto:info.de@saltosystems.com)  
[www.saltosystems.de](http://www.saltosystems.de)

**SALTO Systems, Switzerland**

Eschlikon, Switzerland

Tel: +41 71 973 72 72  
email: [info.ch@saltosystems.com](mailto:info.ch@saltosystems.com)  
[www.saltosystems.ch](http://www.saltosystems.ch)

**SALTO Systems, Netherlands**

Amsterdam, The Netherlands

Tel: +31 206 353 100  
email: [info.nl@saltosystems.com](mailto:info.nl@saltosystems.com)  
[www.saltosystems.nl](http://www.saltosystems.nl)

**SALTO Systems, Belgium**

Brussels, Belgium

Tel: +32 25 88 50 68  
email: [info.be@saltosystems.com](mailto:info.be@saltosystems.com)  
[www.saltosystems.be](http://www.saltosystems.be)

**SALTO Systems, Poland**

Warszawa, Polska

Tel: +48 609 01 7777  
email: [info.pl@saltosystems.com](mailto:info.pl@saltosystems.com)  
[www.saltosystems.pl](http://www.saltosystems.pl)

**SALTO Systems, Slovakia**

Bratislava, Slovakia

Tel: +421 915 579 500  
email: [info.sk@saltosystems.com](mailto:info.sk@saltosystems.com)  
[www.saltosystems.com](http://www.saltosystems.com)

**SALTO Systems, Slovenia**

Balkans Regional Branch Office

Tel: +38 66 99 543 55  
email: [info.si@saltosystems.com](mailto:info.si@saltosystems.com)  
[www.saltosystems.com](http://www.saltosystems.com)

**SALTO Systems, Czech Republic**

Prague, Czech Republic

Tel: +420 734 258 882  
email: [info.cz@saltosystems.com](mailto:info.cz@saltosystems.com)  
[www.saltosystems.com](http://www.saltosystems.com)

**SALTO Systems, Denmark**

Kalundborg, Denmark

Tel.: +45 48 44 88 11  
email: [info.dk@saltosystems.com](mailto:info.dk@saltosystems.com)  
[www.saltosystems.dk](http://www.saltosystems.dk)

**SALTO Systems, Norway**

Jessheim, Norway

Tel.: +47 63 95 40 20  
email: [info.no@saltosystems.com](mailto:info.no@saltosystems.com)  
[www.saltosystems.no](http://www.saltosystems.no)

**SALTO Systems, Sweden**

Stockholm / Malmö, Sweden

Tel.: +46 8-775 87 00  
email: [info.se@saltosystems.com](mailto:info.se@saltosystems.com)  
[www.saltosystems.se](http://www.saltosystems.se)

**SALTO Systems, Finland**

Vantaa, Finland

Tel: +45 48 44 88 11  
email: [info.fi@saltosystems.com](mailto:info.fi@saltosystems.com)  
[www.saltosystems.fi](http://www.saltosystems.fi)

**SALTO Systems, Italy**

Bologna, Italy

Tel: +39 051 72 77 98  
email: [info.it@saltosystems.com](mailto:info.it@saltosystems.com)  
[www.saltosystems.it](http://www.saltosystems.it)

**SALTO Systems, Portugal**

Lisbon / Porto, Portugal

Tel.: +351 220 937 508  
email: [info.pt@saltosystems.com](mailto:info.pt@saltosystems.com)  
[www.saltosystems.com](http://www.saltosystems.com)

**SALTO Systems, Singapore**

Singapore

Tel: +65 6557 22 55  
email: [info.sg@saltosystems.com](mailto:info.sg@saltosystems.com)  
[www.saltosystems.com](http://www.saltosystems.com)

**SALTO Systems, China**

Shanghai, China

Tel: +86 (21) 3157 6115  
email: [info.cn@saltosystems.com](mailto:info.cn@saltosystems.com)  
[www.saltosystems.com](http://www.saltosystems.com)

**SALTO Systems, Hong Kong**

Hong Kong

Tel: +852 3169 1820  
email: [info.hk@saltosystems.com](mailto:info.hk@saltosystems.com)  
[www.saltosystems.com](http://www.saltosystems.com)

**SALTO Systems, Vietnam**

Ho Chi Minh City, Vietnam

Tel: +849 3113 3050  
email: [info.vn@saltosystems.com](mailto:info.vn@saltosystems.com)  
[www.saltosystems.com](http://www.saltosystems.com)

**SALTO Systems, South Africa**

Johannesburg, South Africa

Tel: +27 (0) 87 701 5858  
email: [info.za@saltosystems.com](mailto:info.za@saltosystems.com)  
[www.saltosystems.com](http://www.saltosystems.com)

**SALTO Systems, India**

Mumbai, Indien

Tel: +91 022 4905 4395  
email: [info.me@saltosystems.com](mailto:info.me@saltosystems.com)  
[www.saltosystems.com](http://www.saltosystems.com)

