



THE INTELLIGENT KEY AND STORAGE MANAGEMENT SYSTEM

Secure storage of keys and assets in a modular system, based on RFID technology and managed by an industrial computer.

LexTopTM
intelligent key storage systems

www.loxtop.com



Mate Balogh

CEO and Owner of LoxTop



Zsolt Vichnal

Technical Director and Owner of LoxTop

WELCOME

About us

Our company was founded in 1989, therefore it has a history of more than 30 years.

During this period the company's activities included the manufacturing of security systems such as alarm systems, fire – and security systems, RFID production tracking systems, access control and face recognition systems. Furthermore it included the development of application software, national remote monitoring systems, the manufacturing and development of microcontroller based key management systems for both hardware and software components and system integration.

In 2016, LoxTop went through a profile clearing, thus now we only deal with the production and development of our intelligent key management and asset management systems. We are constantly utilizing our 30 years of experience for the development of our cabinets in the field of security market. The employees of our company are software and hardware development engineers, fire and property protection designers, service and system support technicians and manufacturers. In our systems we use the latest microelectronic devices, equipments and developments therefore we manufacture and deliver reliable, high-tech and top quality systems to our customers.

LoxTop provides 2 year hardware warranty for the Key and Storage Management products. Long term hardware and software support and spare parts are available for our products.

Our dedicated support team ensure a worldwide service and support for our customers and distributors. The software solutions ensure the possibility of the remote maintenance, service and also software upgrades.



PAGE OF CONTENT

04 WHY IT IS NEEDED?

06 PRODUCTS

08 FEATURES

10 MARKET SECTORS

12 MARKET SECTORS

14 SOFTWARE FUNCTIONS

15 MODELS

WHY KEY AND ASSET MANAGEMENT IS NEEDED?



INTELLIGENT KEY & STORAGE MANAGEMENT CABINETS

- The systems are easily accessible from remote devices
- Keys can be returned to a fixed or to any position
- Contactless - RFID based identification for every key position individually
- Increases efficiency and reduces cost
- Fully flexible and modular system
- Manage keys centrally for several buildings
- Keys and lockers can be combined within one cabinet
- Cabinets can be expanded in the future
- Managed access control system for keys and items
- Illuminated key positions make key finding easier
- Stand-alone or networked systems

The modular design of the key cabinet panels and storage boxes allows for a custom built and variable system. The key locker and intelligent storage box system logs and tracks every key movement (key pickup, key return, door opening / closing). The key and storage cabinets can be integrated into companies' ERP and access control systems.



Who needs key management?

Due to the intelligent systems you will always know where your keys are and who is using them. You are able to define, limit key permissions for users. Each event is stored in the Log where you can filter for users, keys and so on.

Each cabinet can manage up to 520 keys but more cabinets can be connected together so the number of keys which can be controlled and configured from a central office are unlimited. Key management systems are suitable for those areas where the keys should be stored in a safe and secured place.



YOU ALWAYS KNOW
who removed the key
and when it was taken or
returned



MONITOR HOW OFTEN
it was accessed and by whom



SECURE STORAGE
in steel cabinets or safes



ACCESS TO KEYS
via access code ,RFID card,
biometrics



KEYS ARE SECURED
by seals to RFID tags



DEFINE ACCESS RIGHTS
to users individually



INVOKE ALERTS
in case of missing key or
overdue keys

PRODUCTS

LoxTop product range is an outstanding solution with 2 main categories. The KEY management systems for vehicles, buildings, facilities, parking areas or secure environments and the STORAGE management systems for assets, tools, special equipments. You can store and track the keys and valuables via key cabinets and electronic lockers and prevent them from unauthorized access.

Our products have captured the interest of small companies and major establishments. Both the hardware and software are developed and manufactured in our factory, so we have the opportunity to meet clients' specific individual needs. Thanks to the full modularity, the systems with same capacity can be ordered in several designs. The cabinets are manufactured from durable materials and made with high-end software solutions which makes the systems easy to install, and have a very customer friendly surface.

IQ KEY CABINET



IQ 50 WALL KEY CABINET

IQ 100 WALL KEY CABINET

IQ 200 WALL KEY CABINET

IQ 300 WALL KEY CABINET



IQ 400 WALL KEY CABINET



IQ 520 WALL KEY CABINET

Box module types

Model	Height	Boxes	Outside dimensions (W×H×D)	Inside dimensions (W×H×D)
IQBoxModule-1u1d	1 unit	1 box	470 × 100 × min.127 (mm)	376 × 79 × min.125 (mm)
IQBoxModule-1u2d	1 unit	2 boxes	470 × 100 × min.127 (mm)	160 × 79 × min.125 (mm)
IQBoxModule-2u1d	2 unit	1 box	470 × 200 × min.127 (mm)	376 × 179 × min.125 (mm)
IQBoxModule-2u2d	2 unit	2 boxes	470 × 200 × min.127 (mm)	186 × 179 × min.125 (mm)
IQBoxModule-3u1d	3 unit	1 box	470 × 300 × min.127 (mm)	376 × 279 × min.125 (mm)
IQBoxModule-3u2d	3 unit	2 boxes	470 × 300 × min.127 (mm)	186 × 279 × min.125 (mm)
IQBoxModule-4u1d	4 unit	1 box	470 × 400 × min.127 (mm)	376 × 379 × min.125 (mm)
IQBoxModule-4u2d	4 unit	2 boxes	470 × 400 × min.127 (mm)	186 × 379 × min.125 (mm)

IQ BOX CABINET



IQ 20 BOX CABINET



IQ 40 BOX CABINET



IQ 140 BOX CABINET

IQ SPECIAL PRODUCTS



IQ 6 RIFLE STORAGE CABINET



CUSTOMIZED IQ KEY & STORAGE CABINET



IQ 25 MINI BOX CABINET



IQ 400 SAFE KEY CABINET

FEATURES OF INTELLIGENT KEY AND STORAGE MANAGEMENT SYSTEM

Cable Seal and RFID Key Holder

Built-in RFID tag in each key holder to keep track of the key usage (key pickup and return). Cable Seal can be used to connect the physical key and the RFID Key Holder together providing a secure seal which cannot be split without damage.



Key Positions with OLED displays

An optional feature which provides an even more high-tech look to the cabinet and gives the users more information about the status of the keys than the standard key positions.



RFID Card Reader

RFID badges/cards can be used to log in to the cabinet. They can also be an additional authenticational step by using Access Code and the RFID badge to log in to the cabinet. It is also possible to integrate third party RFID card readers in the system if our customer has a preferred card reader.



External Miniboxes

Cost effective way for the storage of smaller items. Each Minibox has an RFID tag attached to it, which provides information for the administrators of the minibox events; removal, return. The access to these boxes can be controlled the same way as to the RFID Keys.



RFID based asset recognition

Track the usage of each device in your facility by using individual asset identification methods like RFID tagging. Our system identifies exactly which assets are in use, and what user has them.



10.1" capacitive touch-screen

- rugged industrial computer
- built in SSD and external memory for backup
- two ethernet ports
- integrated camera
- Windows operating system



Weight measuring tray module

With the help of the measuring tray it can be ascertained if the box is empty, or the right value is placed inside.



RFID Inside Key Holder

Most important keys can be securely stored inside the box, furthermore it can be prevented to copy the key.



Master Key Cylinders

To lock the physical keys into the key positions. The keys are stored in key cylinders matching the door inserts. After inserting the key and turning it, the key is locked in the position, making it impossible to unauthorized personnel to access the key. Each particular key can only be returned to the proper cylinder.



MARKET SECTORS



AIRPORT



LoxTop offers key and storage management systems to protect keys and assets housed in airports. The product range can be used to store keys needed for access to different areas of an airport, including gates, operational spaces, and other security areas restricted from general public. These security solutions can also serve as a fleet management system for airport shuttle services and ground staff.

Our software solutions let administrators generate system-wide access privileges for personnel, different keys, or work shifts. These key and asset management systems let you check the current status and transaction files of any keys. You can also make scheduled reports on current key details or user transactions to investigate the daily actions. LoxTop offers you a modular, scalable security solution ideal for storing keys and assets that must be properly accounted.

POLICE



Storing keys and items in police departments has become more and more important nowadays. Furthermore the weapons and evidences also have to be stored in a secured system. There are several reasons why intelligent key and asset management systems are necessary solutions for police departments. Providing that there is method to secure the police officer's assets that is only accessible by preconfigured authorization, and that alerts can be sent when assets are placed in or removed from a locker, this way it helps to ensure that dangerous weapons or assets cannot be taken by the wrong people.

LoxTop Intelligent key and asset management system can consist multiple devices which are all networked – synchronized together. These intelligent systems allow police departments to track weapons, mobile devices, and other major assets in the entire building, such as a police station, courthouse, or municipal complex. It is easy to find the keys or assets due to the traceability in these intelligent systems. With daily report the main administrator of the system can check the daily events and actual status of keys and assets. This makes it easy to search for missing devices, evidence or weapons. LoxTop has many different types and sizes of storage boxes for the intelligent asset management system.

PRISON



LoxTop intelligent key and asset management systems are fully customizable to help the daily processes that drive your prison facility, resulting in greater security, efficiency, while lowering the operating costs. The LoxTop key and asset management systems can be in use 24/7 providing an incorruptible environment. Strict access control and precise management of assets is the most important within any security-based organization.

Through our intelligent key cabinets and lockers every event is recorded, generating a more controllable environment, and complete traceability for your sensitive and protected items. With key management systems you can control and manage access to prison officer keys for secured areas, vehicles, equipment and more to ensure they never get past the secure perimeter. The LoxTop asset management cabinets can be used to securely control the use of body worn cameras, weapons, taser, pepper spray, mobile phones, visitors' assets, and more.

Benefits

- **Managed access control system for keys and valuables**
- **Illuminated key positions make finding keys very easy**
- **Return any key to any open key-place and the system will remember the new position**
- **Provides access records and reports**
- **Helps reducing costs – less lost keys lead to lower expenses and higher security**
- **Improves efficiency**
- **Access is fully monitorable**
- **Items are secured in our intelligent lockers and can only be taken by authorized users**
- **Due to the controlled environment the users are 100% accountable for the items they use**
- **RFID based asset recognition can be used to uniquely identify the assets**
- **Define the permissions separately for each item**

GOVERNMENT



LoxTop systems meet the strict requirements of military and government institutions. It is always a difficult task to secure a government or military facility, as there are many valuable and sensitive items, restricted areas and often hundreds of staff members. This can easily consume huge amount of management resources which leads to very high maintenance costs. Due to the embedded industrial Windows PC you can easily check for history in the Log. Giving permissions to users which keys are allowed to use in which time period either in front of the terminal or through the Web-Application over the local network from your computer.

The modular design of the key cabinet panels and storage boxes allows for a custom built and variable system (different sizes of firearms are also supported). In our products we use the most advanced micro-electronic devices, equipment and developments which are high-reliability and high-tech equipment, key control systems; we are delivering them to our customers. Our products are made with contactless (!), RFID technology with built-in industrial PC, manufactured from durable materials and made with high-end software solutions which are effecting that it is easy to install, it has a very customer friendly surface and our systems are very reliable.



EDUCATION

Schools, universities and other educational facilities always has huge number of keys to be stored in a secured place. You are able to define and limit key permissions for users. One cabinet can manage up to 520 keys, but more cabinets can be connected together so the number of keys are unlimited, which can be controlled and configured from a central office. Keys for the different areas can be grouped with tamper-proof key rings, and the reports will ensure that the last person remove a key can be identified. Unique storage / locker systems also help to keep mobiles and laptops or other small assets in LoxTop's security solutions.

These modular systems can be tailored to your exact needs with various compartment sizes and extension units to increase storage capacity as you need it for the future. During emergency status all keys and lockers can be opened by the security staff. Our intelligent locker systems have unique RFID tagging solution, USB charging option and can provide secure storage for all student's devices.

This way it can ensure that devices are charged and ready for use every time a student goes to remove it from the intelligent asset management system.



HEALTH CARE

Ensuring controlled and protected usage of medicines and keys is needed in healthcare facilities. LoxTop systems assure protected access to medicine storage and dispensing areas. Through key removal notifications, processes can be more secured that only authorized personnel have access to these materials within the different organization.

For healthcare fleet's key management systems ensure that only the authorized vehicle drivers can access the car keys, and can store events when keys are removed and replaced. In healthcare facilities it is required to use costly and sensitive equipment. Installing a key and storage management system decrease the chance of having to replace expensive equipment and protects organizations from liability if an equipment is damaged.

In hospitals and nursing homes there is often different staff and equipment. Access permissions for the different areas need to be highly controlled, therefore you need a key management system. In the storage management system the doctors and nurses are able to secure belongings and different assets, before entering sterile or dangerous areas.



AUTOMOTIVE DEALERSHIP

LoxTop's product range is suitable for storing keys and documents of car dealer companies and rental fleets. These companies also need to track car key activity. Each key secured in a LoxTop system has a unique identification chip. The keys are accessed and returned only by the authorized users in the system by using an access code or other identification methods (access cards, biometrics). Controlling huge number of vehicles, lost keys, and damages can lead to needless expenses. LoxTop key and storage systems help you to track all of your keys in real time.

With booking functionality, sales person meeting a client for a test drive can be confident that the car will be in the key management system at the reserved time. In the daily operations, key management software will send an automatic email alert if a key becomes overdue. The fleet management software can help users gain real-time visibility into their daily operations while increasing driver satisfaction and decreasing fuel usage with analytics and continuous reporting.

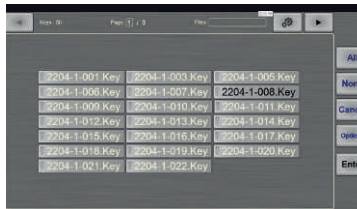
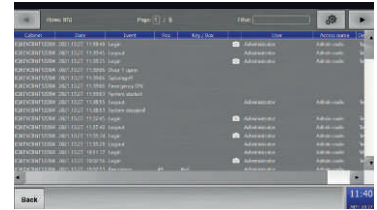
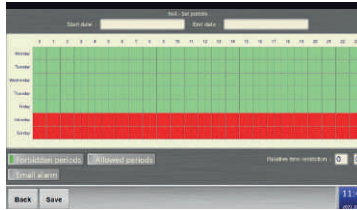
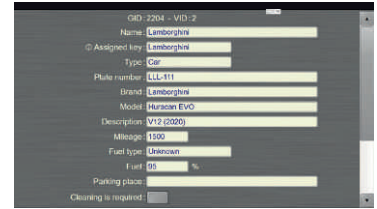
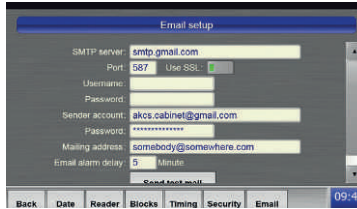
BANK

The protection of keys and assets in banks and financial premises is one of the most necessary action you need to do. LoxTop intelligent key management and asset management solutions can help you in this process. You can place an intelligent key management and asset management cabinet onto the wall or into a safe room. In LoxTop's solution the two-person authentication function enables higher security for the stored keys and assets. Banks use a huge number of keys every day, such as keys of safes, offices, treasury, etc. Nowadays it is more and more important to keep keys and assets secured.

The movement of keys has to be strictly controlled so the management knows who used which keys and when. Each key can have locked fix places in the system. One of the most favorable function in our systems is the reports. The statement list (report) shows the current state of the keys for the bank management. Bank has to ensure the security of money and the information belonging to them.

SOFTWARE FUNCTIONS

- Detailed event log
- Customizable user profiles
- Different access levels
- Email notifications
- Fleet management
- Daily report
- Camera
- Remote help
- Automatic database backup
- Multi languages
- Worktime reports
- Possibility for automatic software update
- Personalized customer logo on the display
- Remote management via Web browser
- Booking function for keys and boxes
- Time restriction
- Database synchronization between cabinets
- Lockup possibility for key and boxes



OUR REFERENCES



RICHEMONT



Stockholm Arlanda Airport
SWEDAVIA SWEDISH AIRPORTS



KAISER PERMANENTE



Polisen
Swedish Police

Goldman Sachs



CAL MARITIME



Berkeley
UNIVERSITY OF CALIFORNIA

DIMENSIONS AND CAPACITY OF STANDARD PRODUCTS

Standard models - Key cabinets

Model	Storage capacity	Physical dimensions (width × height × depth)
Key Cabinet - 50	10 - 50 keys in one frame	782 × 575 × 200 (mm)
Key Cabinet - 100	10 - 100 keys in one frame	782 × 1075 × 200 (mm)
Key Cabinet - 200	20 - 200 keys in two frames	1395 × 1075 × 200 (mm)
Key Cabinet - 300	30 - 300 keys in three frames	1955 × 1075 × 200 (mm)
Key Cabinet - 400	40 - 400 keys in four frames	2515 × 1075 × 200 (mm)
Key Cabinet - 520	40 - 520 keys in four unique frames	2515 × 1375 × 200 (mm)

Standard models - Box cabinets

Model	Storage capacity	Physical dimensions (width × height × depth)
Box Cabinet - 10	2 - 10 standard boxes in one block	782 × 575 × 200 (mm)
Box Cabinet - 20	2 - 20 standard boxes in one block	782 × 1075 × 200 (mm)
Box Cabinet - 30	4 - 30 standard boxes in two blocks	1395 × 1075 × 200 (mm)
Box Cabinet - 40	4 - 40 standard boxes in two blocks	1395 × 1075 × 200 (mm)
Box Cabinet - 50	6 - 50 standard boxes in three blocks	1955 × 1075 × 200 (mm)
Box Cabinet - 100	10 - 10 standard boxes in five blocks	3075 × 1075 × 200 (mm)





CONTACT US

+36 (66) 520 980

sales@loxtop.com

Almáskerti Ipari Park 14. Békéscsaba, HU 5600

